



Monthly Newsletter

December 2020

The Tulare County RCD Board Meetings are open to the public and typically held on the second Wednesday of each month at noon in the Natural Resource Conservation Service (NRCS) Conference Room inside the USDA Service Center:

**3530 W Orchard Ct
Visalia, CA 93277
(559) 622-0378**

[Tulare County RCD Website](#)

[Tulare County RCD Email](#)

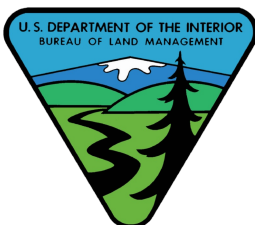
Due to COVID-19 our meeting for the month of December was hosted on Zoom.

The meeting was held on Wednesday December 9th.

Email teri@tularecountyrcd.com to receive minutes from the meeting.

teri@tularecountyrcd.com

CURRENT PROJECTS



Bureau of Land Management:

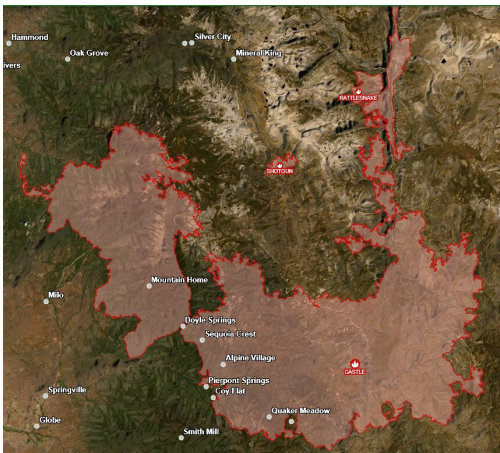
Case Mountian

Tulare County RCD currently was working on a project with the Bureau of Land Management to improve the forest health conditions of Case Mountian. The project has been completed and approved by the BLM. South Fork Cutters ran three 15-man crews, some brought in from Oregon, to get the acres done as quickly as possible. Two hundred seventy one acres of work was done in about 5 weeks time.



LOCAL EVENTS

SQF Complex Fire



The SQF Complex Fire is now the largest wildfire in Tulare County's modern history. The wildfire has burned over 170,000 acres of Tulare County forest land.

Tulare County Local Assistance Center

County of Tulare has opened a comprehensive Local Assistance Center for residents impacted by the SQF Complex Fire. Residents who lost a home, suffered property damage, or impacted by the wildfire. Receive assistance with information, basic needs, and referrals to assistance program and services.

Click the link below to learn more:

[Tulare County LAC](#)

Please note: the deadline for the State-Sponsored Consolidated Debris

Removal Program has been extended to January 15, 2021.

The LAC link provided above will take you to all the resources available to those affected by the SQF Complex Fire from Federal help, State help, and Local help.

SQF Complex Fire Hotline for residents:

(559) 802-9790

TECHNICAL ASSISTANCE AVAILABLE



STILL IN EFFECT: The local NRCS is providing free technical assistance to those affected by the SQF Complex Fire.

Contact the Visalia Service Center to learn more:



NRCS is providing
FREE TECHNICAL ASSISTANCE

to protect life and property on
privately owned land that was
damaged due to the wildfires.

(Examples: debris flows, hillside erosion.)

For assistance with post-fire recovery contact your local NRCS office:

**NRCS Visalia Service Center
3530 W Orchard Ct
Visalia, CA 93277
(559) 754-3183**

Fact Sheets Available at:

www.nrcs.usda.gov/wps/portal/nrcs/main/ca/newsroom/features/

USDA is an equal opportunity provider, employer, and lender.

DRIVER/OPERATOR WANTED

Tulare County

Job description:

RCD Water Tender Driver/Operator

Qualifications for a driver would include:

- CDL class “A” or “B” license with “tanker” endorsement.
- Current Cal Fire and USFS “8-hour Safety Training” certificate.
- Fire experience preferable.

To apply contact:

Bob Puls

Project Manager

email: rvfire@ocsnet.net

phone: (559) 783-4148

- Drive and operate a water tender on active fires.
- Water tender to support fire agency suppression efforts.
- Work shifts “may” be up to 24 hours per shift.
- Must follow instructions and be a self-starter.
- Mechanical ability a must.
- Commitment time for work may be extended, i.e. days, weeks or up to a month.
- Driver must provide their personal gear, i.e. change of clothes and toiletries.
- Applicant must provide their own lugged sole- 8 inch high lace up boots.

RCPP CRISIS TO OPPORTUNITY

Sierra Nevada Tree Mortality

The RCD is providing technical assistance to private non-industrial forest landowners in the form of site visits, creation of forest management plans, and promoting participation in the NRCS EQIP funding through the RCPP (Regional Conservation Partnership Program). This program is for land owners whom are looking to reduce the fuel load on their property.

Direct Line for your Tulare County RCPP assistance:

(559) 754-3155

RCPP Email



The RCPP Crisis to Opportunity: Sierra Nevada Tree Mortality program makes funding available for work within the 100-foot

Defensible Space.

The RCPP Sierra Nevada Tree Mortality program requires a minimum of one dead or dying conifer tree within your 100 foot defensible space caused by the bark beetle or drought.
