



Monthly Newsletter

November 2020

The Tulare County RCD Board Meetings are open to the public and typically held on the second Wednesday of each month at noon in the Natural Resource Conservation Service (NRCS) Conference Room inside the USDA Service Center:

3530 W Orchard Ct

Visalia, CA 93277

(559) 622-0378

[Tulare County RCD Website](#)

[Tulare County RCD Email](#)

Due to COVID-19 our meeting for the month of October will be hosted on Zoom.

The meeting will be on Wednesday November 18th (moved to the 3rd Wed due to Veteran's Day) starting at 12 o'clock noon to 2:00pm.

Email teri@tularecountyrcd.com to receive the Zoom link and the agenda for the meeting.

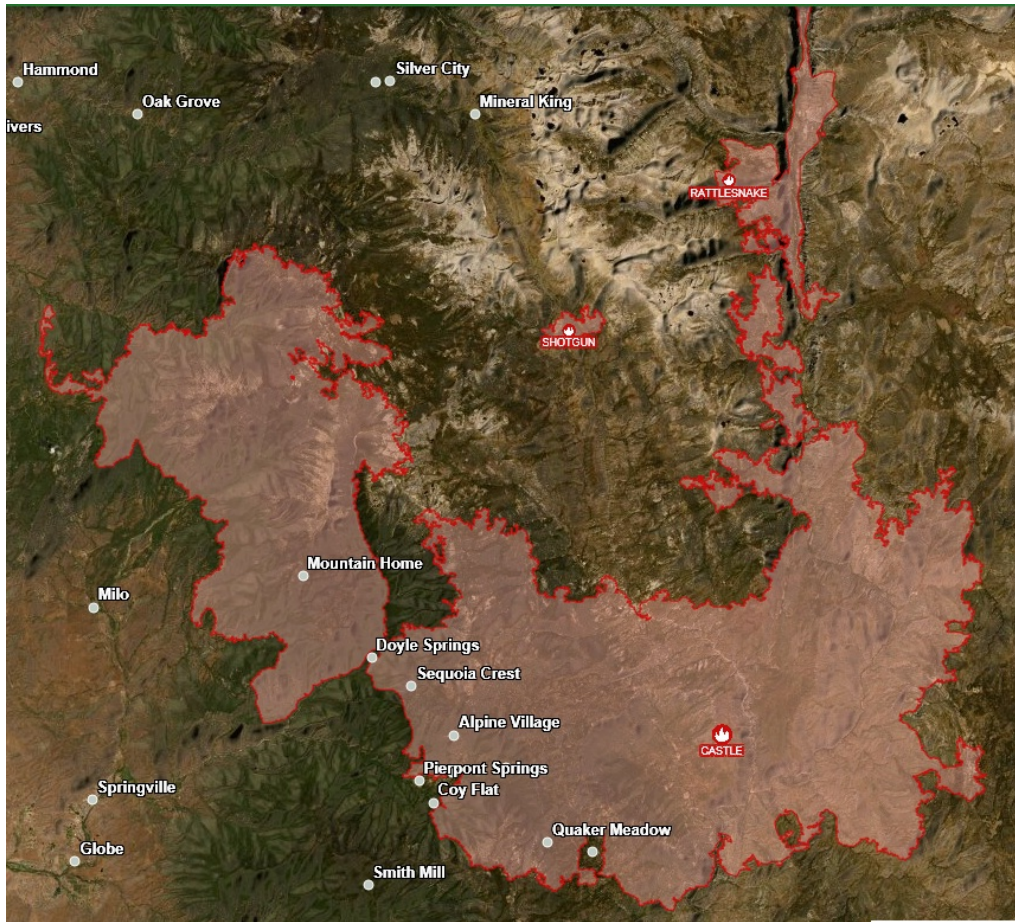
teri@tularecountyrcd.com

LOCAL EVENTS

SQF Complex Fire

The SQF Complex Fire is now the largest wildfire in Tulare County's modern

history. The wildfire has burned over 170,000 acres of Tulare County forest land.



Tulare County Local Assistance Center

County of Tulare has opened a comprehensive Local Assistance Center for residents impacted by the SQF Complex Fire. Residents who lost a home, suffered property damage, or impacted by the wildfire. Receive assistance with information, basic needs, and referrals to assistance program and services.

click the link below to learn more:

[Tulare County LAC](#)

The LAC link provided above will take you to all the resources available to those affected by the SQF Complex Fire from Federal help, State help, and Local help.

SQF Complex Fire Hotline for residents:

(559) 802-9790

TECHNICAL ASSISTANCE AVAILABLE



U.S. Department of Agriculture
Natural Resources Conservation Service

The local NRCS is providing free technical assistance to those affected by the SQF Complex Fire.
Contact the Visalia Service Center to learn more:



NRCS is providing
FREE TECHNICAL ASSISTANCE
to protect life and property on
privately owned land that was
damaged due to the wildfires.
(Examples: debris flows, hillside erosion.)

For assistance with post-fire recovery contact your local NRCS office:

NRCS Visalia Service Center
3530 W Orchard Ct
Visalia, CA 93277
(559) 754-3183

Fact Sheets Available at:
www.nrcs.usda.gov/wps/portal/nrcs/main/ca/newsroom/features/

USDA is an equal opportunity provider, employer, and lender.

DRIVER/OPERATOR WANTED

Tulare County RCD Water Tender Driver/Operator

Job description:

- Drive and operate a water tender on active fires.
- Water tender to support fire agency suppression efforts.
- Work shifts “may” be up to 24 hours per shift.
- Must follow instructions and be a self-starter.
- Mechanical ability a must.
- Commitment time for work may be extended, i.e. days, weeks or up to a month.
- Driver must provide their personal gear, i.e. change of clothes and

toiletries.

- Applicant must provide their own lugged sole- 8 inch high lace up boots.

Qualifications for a driver would include:

- CDL class “A” or “B” license with “tanker” endorsement.
- Current Cal Fire and USFS “8-hour Safety Training” certificate.
- Fire experience preferable.

To apply contact:

Bob Puls

Project Manager

email: rvfire@ocsnet.net

phone: (559) 783-4148

RCPP CRISIS TO OPPORTUNITY

Sierra Nevada Tree Mortality

The RCD is providing technical assistance to private non-industrial forest landowners in the form of site visits, creation of forest management plans, and promoting participation in the NRCS EQIP funding through the RCPP (Regional Conservation Partnership Program). This program is for land owners whom are looking to reduce the fuel load on their property.

Direct Line for your Tulare County RCPP assistance:

(559) 754-3155

RCPP Email

The RCPP Crisis to Opportunity: Sierra Nevada Tree Mortality program makes funding available for work within the 100-foot Defensible Space.



The RCPP Sierra Nevada Tree Mortality program requires a minimum of one dead or dying conifer tree within your 100 foot defensible space caused by the bark beetle or drought.

Ponderosa Community Protection Project "2019"

Ponderosa is a community of 130 homes located 27 air miles east of Porterville at an elevation of 7,200'. The majority of the 320-acre development is divided into lots of approximately 1/3 acre in size. There are several larger parcels located along the eastern and southern boundaries. The community is surrounded by the Giant



Sequoia National Monument. There are two components to this project: 1) remove dead and dying trees that threaten homes, roads, trails, or infrastructure, 2) thin trees and treat ladder fuels in order to break up the horizontal and vertical continuity of fuels within the community. The entire 320 acres, excluding the meadows, is proposed for treatment, requiring "Right to Enter" access from landowners. Phase 2 will continue with two components: 1) remove dead and dying trees that threaten homes, roads, trails, or infrastructure, and 2) thin trees and thin ladder fuels.

Ponderosa Community After the SQF Complex Fire "2020"



All of the hard work done in Ponderosa Community Protection Project looks to have paid off. The devastating SQF Complex Fire didn't enter their community & it has been said it is all thanks to the work done in the Ponderosa Community Protection Project described above. Special thanks to all of those involved in those efforts:

California Climate Investments

Cal Fire

Tulare County RCD

Jordan Slate Earthwork

Community of Ponderosa
